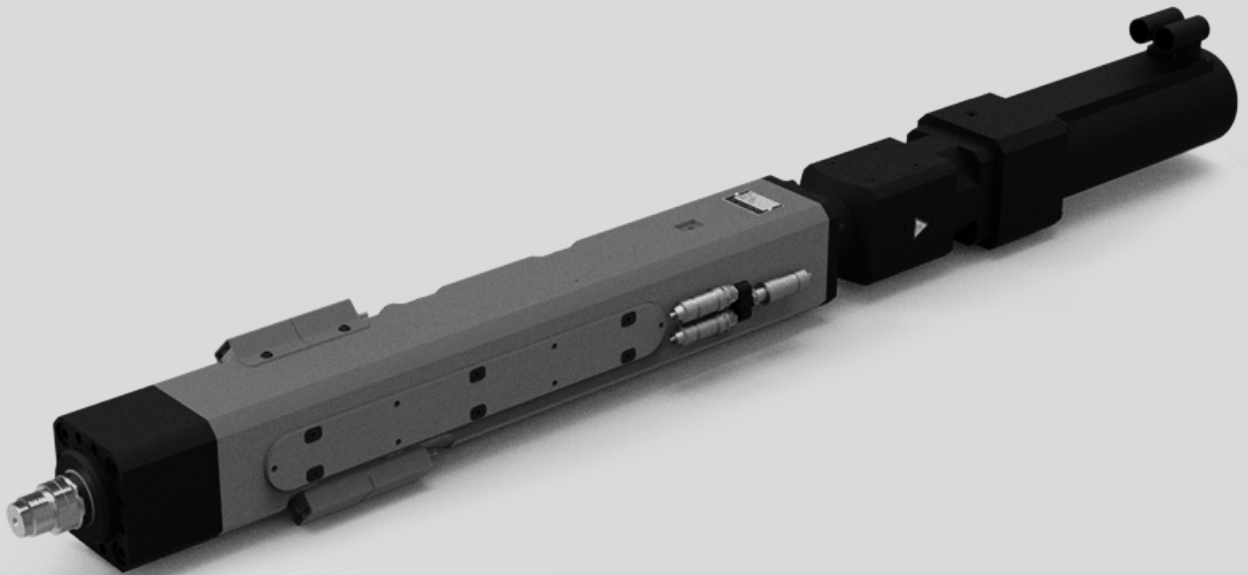


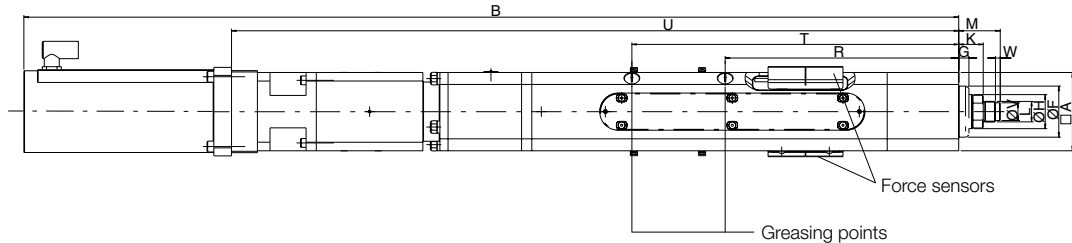
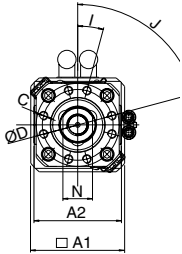
# TOX®-ElectricDrive Type EPMS

Data sheet 40.10  
2016/09



# TOX<sup>®</sup>-Electric Power Module

## Type EPMS 5 – 200 kN



### Dimensions and weights

Type	Stroke mm	Max. Nominal force kN	Weight approx. kg
EPMS 005.030.200	200	5	16
EPMS 010.030.250	250	10	21
EPMS 025.030.250	250	25	25
EPMS 055.030.300	300	55	43
EPMS 100.030.300	300	100	72
EPMS 200.030.300	300	200	140

Type	A	A1	A2	B	C	D	F <sub>T</sub>	G	H	I	J	K <sup>1)</sup>	L	M <sup>1)</sup>	N <sup>2)</sup>	R	T	U	V <sub>g6</sub>	W
EPMS 005.030.200	70	90	76	755	8xM8x16	60	50	13	25	15°	75°	25	M12x1.5	37	19	278.5	-	544	-	-
EPMS 010.030.250	70	90	76	939	8xM8x16	60	50	10	30	15°	75°	20	M12x1.5	32	24	300	390	720	-	-
EPMS 025.030.250	70	90	76	1047	8xM8x16	60	50	10	30	15°	75°	28.5	M22x2	48.5	24	300	390	568	18	7
EPMS 055.030.300	95	105	105.5	1218	8xM10x20	83	70	10	40	15°	75°	35	M30x2	60	34	316	456	678	26	7
EPMS 100.030.300	115	130	122	1373	8xM12x25	98	75	15	50	15°	75°	36	M30x2	61	41	343	483	1316	26	7
EPMS 200.030.300	145	-	146	1618	8xM16x25	125	100	18	70	15°	75°	46	M39x2	81	60	385	525	-	-	-

Dimensions in mm

Specifications EPMS	005.030.200	010.030.250	025.030.250	055.030.300	100.030.300	200.030.300
<b>Mechanical</b>						
Rated force push	5 kN	10 kN	25 kN	55 kN	100 kN	200 kN
Rated force pull	3 kN	3 kN	7.5 kN	16.5 kN	30 kN	60 kN
Stroke <sup>2)</sup>	200 mm	250 mm	250 mm	300 mm	300 mm	300 mm
Max. speed <sup>2)</sup>	300 mm/s	300 mm/s	220 mm/s	200 mm/s	200 mm/s	120 mm/s
Max. short-term overload	10% of rated force					
Distance repeatability <sup>3)</sup>	< ± 0.01 mm					
<b>Sensors</b>						
Load cell <sup>4)</sup>	0.25 – 5 kN	0.5 – 10 kN	1.25 – 25 kN	2.75 – 55 kN	5 – 100 kN	10 – 200 kN
Accuracy	< +/- 0.5% of rated force, pressing					
Resolver	■	■	■	■	■	■
Resolution (theoretically)	0.0012 mm	0.0012 mm	0.0004 mm	0.0004 mm	0.0005 mm	0.0003 mm
<b>Electrical</b>						
Protection class	Motor/drive IP54 (as component)					
Mains supply	see servo controller					
Climatic conditions	+ 10° to + 40° C, from 40° C performance loss, max. 55° C; air moisture < 75 %, without condensation					

<sup>1)</sup> Zero position of drive is the reference (marked) position + 3 mm.

<sup>2)</sup> Specials on request (colour, stroke, speed, ...)

<sup>3)</sup> In thermal transient condition

<sup>4)</sup> Recommended operating range 5 – 100%